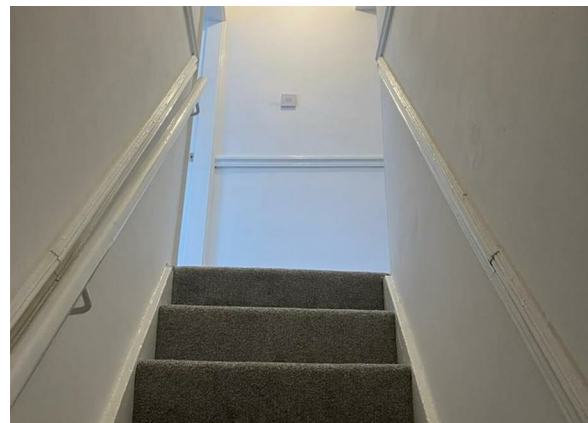
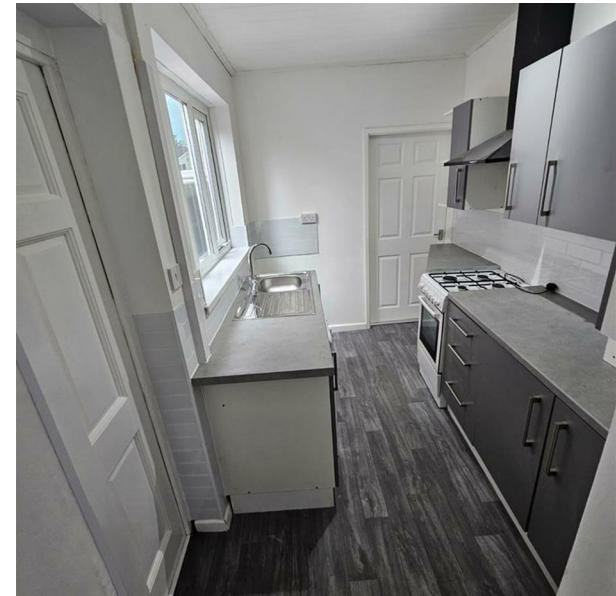


Nine Elms Lane, Wolverhampton, WV10 9AF

£145,000

Council Tax Band: A



3-Bedroom Home – 46 Nine Elms Lane, Wolverhampton WV10 9AF
Welcome to this well-maintained property located in the heart of Wolverhampton.
46 Nine Elms Lane offers a comfortable layout featuring:

- 3 bedrooms
- 2 reception rooms
- A separate kitchen
- A bathroom

This home provides ample space for families or professionals looking for a practical and well-located rental. Situated close to local amenities, schools, and transport links, it offers easy access to surrounding areas and the city centre. Enquire now to arrange a viewing or request further details.



Open House Edgbaston



Energy Efficiency Rating		
	Current	Potential
Very energy efficient - lower running costs		
(92 plus) A		85
(81-91) B		
(69-80) C		
(55-68) D	59	
(39-54) E		
(21-38) F		
(1-20) G		
Not energy efficient - higher running costs		
England & Wales		EU Directive 2002/91/EC